



Erasmus Drive, Derby, DE1 2EH

Part of
**ANDREW
GRANGER & CO**

**SHELDON
BOSLEY
KNIGHT**

LAND AND
PROPERTY
PROFESSIONALS

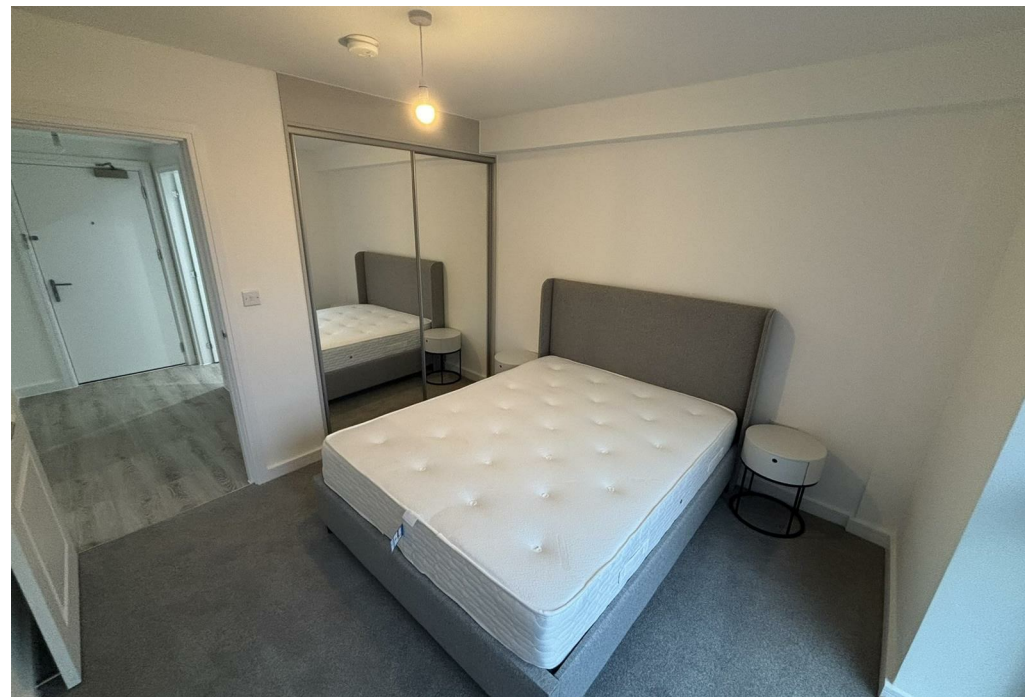
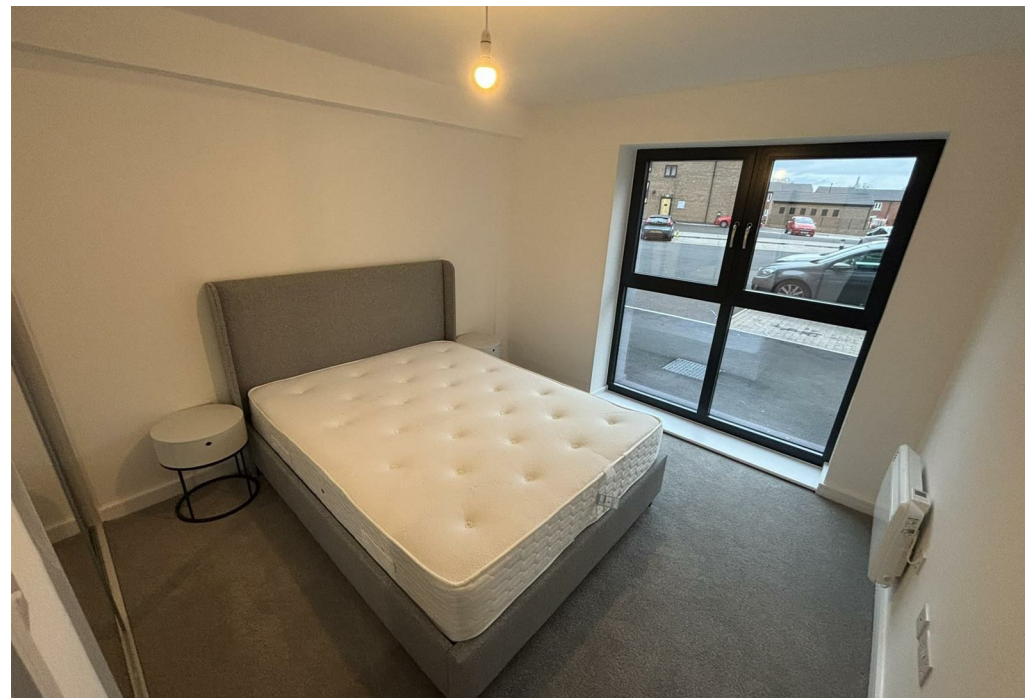
Property Description

AVAILABLE NOW, NEW HOME

VIEWING HIGHLY RECCOMENDED

An opportunity has arisen to rent this new luxury one bedroomed, ground floor apartment, located at the heart of Derby City with easy access to the town centre and local amenities. The apartment is situation in close proximity of Florence Nightingale Community Hospital and Derby Train Station. The accommodation comprises of entrance hall, lounge with open plan fully fitted dining kitchen including, oven, hob, fridge freezer, washing machine and microwave. There is good sized double bedroom with fitted wardrobes and bathroom including bath, shower over bath, WC and basin. Outside offers an off road parking space for one vehicle. The property benefits from electric heating and UPVC double glazed windows. The property is offered part furnished. Council Tax Band: to be determined. Energy Rating: B. Initial 6 Month Tenancy.







Key Features

- AVAILABLE NOW
- NEW HOME
- 1 Bedroom Apartment
- EPC Rating: B
- Derby
- 1 Off Road Parking Space
- Initial 6 Month Tenancy
- Council Tax Band to be detemines

£975 PCM